

simactive
HIGH-END PHOTOGRAMMETRY SOFTWARE

CORRELATOR3D DISTRIBUTED PROCESSING EXAMPLE

Using multiple PCs to speed-up the completion of large projects

Project Characteristics

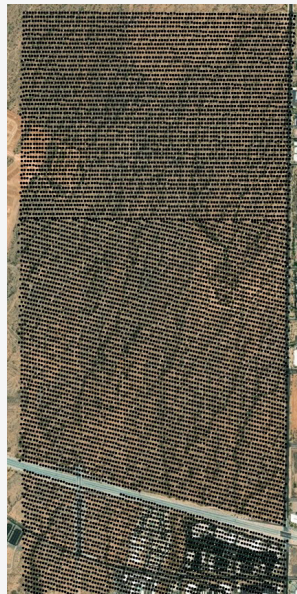
12,000 Sony RX1 (42 MP) Images

GSD (0.60 inches / 1.5 cm)

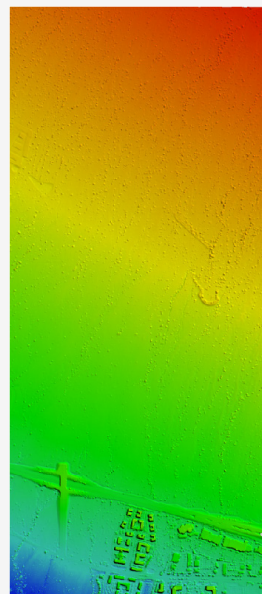
VTOL Fixed-Wing Drone

PCs with Intel i7, GPU NVIDIA
GeForce RTX 3060, SSD,
and 16 GB RAM

Overview



DSM



Mosaic



GET IN TOUCH

www.simactive.com

contact@simactive.com



Processing Times

1 PC 

2 PCs 

Aerotriangulation

04h38m07s

02h18m43s

DSM / Point Cloud Generation

09h15m55s

04h36m22s

Orthorectification

01h53m12s

00h56m01s

Mosaic

02h42m32s

02h42m32s

Total

19 hours

10 hours

Summary

- Speed increase from using 2 PCs

_____ **1.9 x**

- 12,000 images @ 42 MP processed in under

_____ **10 hrs**

- Time savings

_____ **9 hrs**

Benefits of Distributed Processing



Significantly accelerate processing speed



Deliver larger projects faster



Profit from the computing power available on your network

